



The South Africa I know, the home I understand

Statistical release

P0441

Gross domestic product

Fourth quarter 2014

**Embargoed until:
24 February 2015
11:30**

Enquiries:

User information service
012 310 8600/8390/4892

Forthcoming issue:

First quarter 2015

Expected release date

26 May 2015

CONTENTS

	Page
KEY FINDINGS FOR THE FOURTH QUARTER OF 2014	2
KEY FINDINGS FOR ANNUAL ESTIMATES OF 2014.....	5
NOTES.....	6
THE TABLES	7
KEYS BETWEEN PRODUCTS USED IN THE SUPPLY AND USE TABLES AND CPC GROUPS	15
KEYS BETWEEN INDUSTRIES USED IN THE SUPPLY AND USE TABLES AND SIC GROUPS	19
ADDITIONAL INFORMATION	22

KEY FINDINGS FOR THE FOURTH QUARTER OF 2014

Real gross domestic product at market prices increased by 4,1 per cent quarter-on-quarter, seasonally adjusted and annualised

The largest contributions to the quarter-on-quarter growth of 4,1 per cent were as follows:

- The manufacturing industry contributed 1,2 percentage points based on growth of 9,5 per cent;
- The mining and quarrying industry contributed 1,1 percentage points based on growth of 15,2 per cent; and
- Finance, real estate and business services contributed 0,7 of a percentage point based on growth of 3,5 per cent.

Key economic developments

The following points should be noted when analysing the recent performance of the economy:

- Economic activity in the manufacturing industry reflected positive growth of 9,5 per cent due to higher production in the petroleum, chemical products, rubber and plastic products division; the basic iron and steel, non-ferrous metal products, metal products and machinery division; and the motor vehicles, parts and accessories and other transport equipment division;
- Economic activity in mining and quarrying reflected positive growth of 15,2 per cent due to higher production in the mining of 'other' metal ores (including platinum) and 'other' mining and quarrying (including diamonds);
- The growth in finance, real estate and business services was due to increases in activities in the financial markets and banking;
- The growth in the agriculture, forestry and fishing industry was due to higher production in horticulture and animal products; and
- The wholesale, retail and motor trade; catering and accommodation industry reflected negative growth of 0,3 per cent due to decreases in turnover in most trade divisions.

The unadjusted real GDP at market prices increased by 1,3 per cent year-on-year

The most notable performances of industries in the fourth quarter of 2014 compared with the fourth quarter of 2013 were as follows:

- The agriculture, forestry and fishing industry increased by 4,2 per cent;
- The construction industry increased by 2,9 per cent;
- The transport, storage and communication industry increased by 2,6 per cent;
- General government services increased by 2,4 per cent;
- The mining and quarrying industry decreased by 1,6 per cent; and
- The electricity, gas and water industry decreased by 0,9 per cent.

Figure 1 – Growth in gross domestic product year-on-year (Y/Y) and quarter-on-quarter seasonally adjusted and annualised (Q/Q)

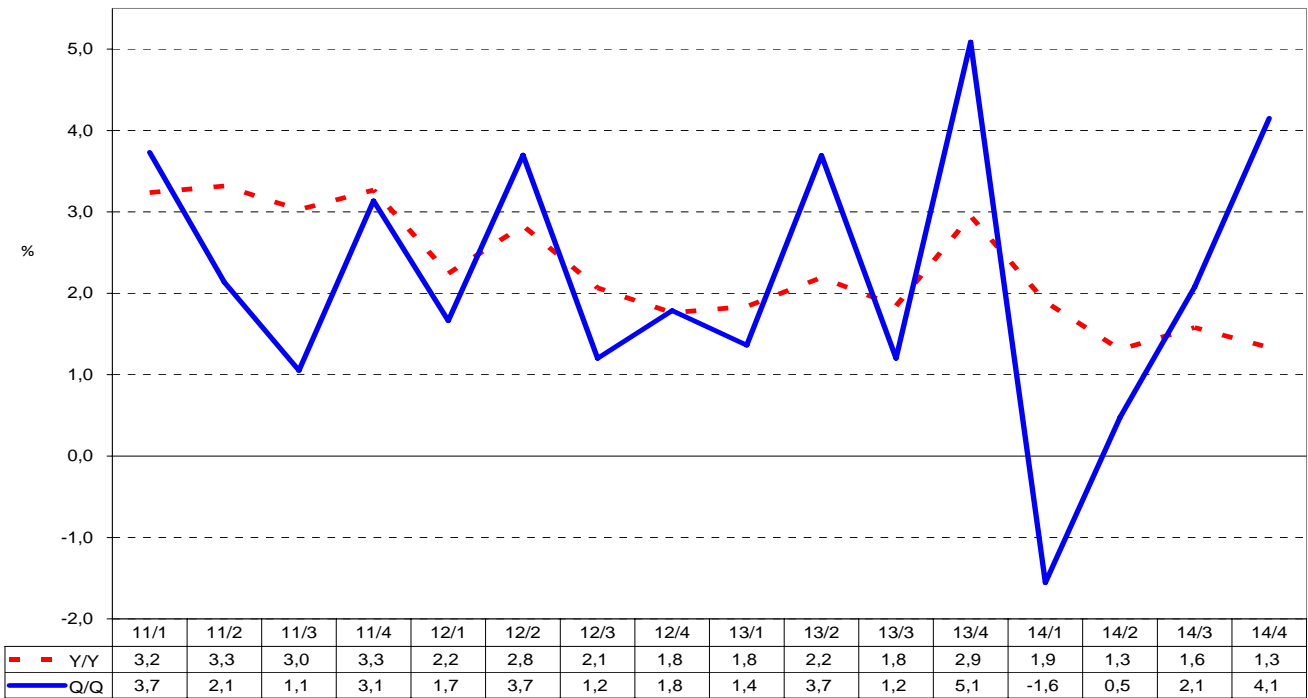
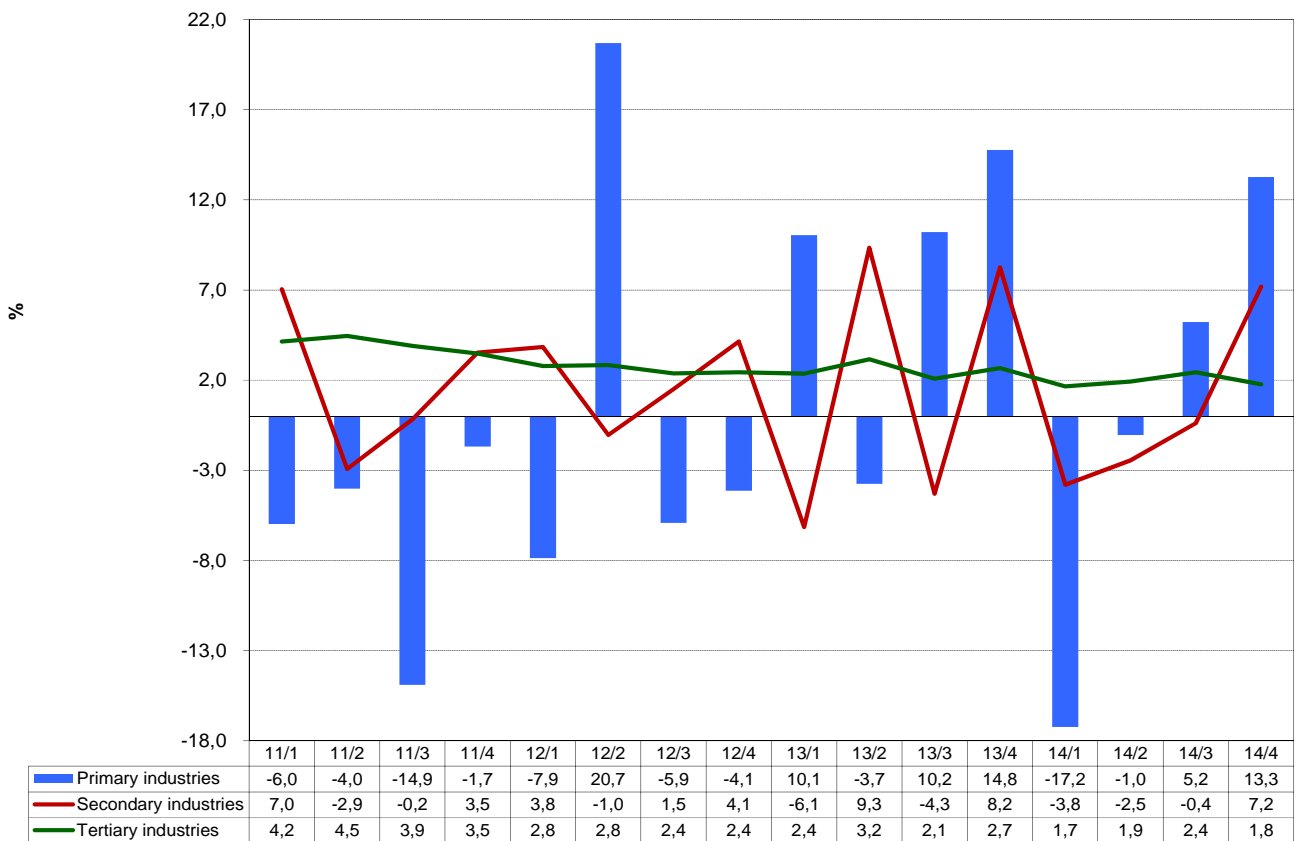


Figure 2 – Value added growth rates in various sectors (seasonally adjusted and annualised)



Nominal GDP estimated at R979 billion for the fourth quarter of 2014

The nominal GDP at market prices during the fourth quarter of 2014 was R979 billion, which is R16 billion more than in the third quarter of 2014. The most notable performances were as follows:

- Wholesale, retail and motor trade; catering and accommodation expanded by R15 billion to R139 billion;
- Finance, real estate and business services expanded by R6 billion to R181 billion;
- Agriculture, forestry and fishing decreased by R12 billion to R10 billion; and
- Electricity, gas and water decreased by R7 billion to R26 billion.

Structure of the economy

The largest industries, as measured by their nominal value added in the fourth quarter of 2014, were as follows:

- Finance, real estate and business services – 20,7 per cent;
- General government services – 16,9 per cent;
- Wholesale, retail and motor trade; catering and accommodation – 16,0 per cent; and
- Manufacturing – 13,7 per cent.

KEY FINDINGS FOR THE ANNUAL ESTIMATES OF 2014

Real gross domestic product at market prices increased by 1,5 per cent in 2014, following an increase of 2,2 per cent in 2013

The largest contributions to the increase in economic activity in 2014 were as follows:

- General government services contributed 0,5 of a percentage point based on growth of 3,0 per cent;
- Finance, real estate and business services contributed 0,4 of a percentage point based on growth of 2,2 per cent; and
- The wholesale, retail and motor trade; catering and accommodation industry and the transport, storage and communication industry each contributed 0,2 of a percentage point based on growth of 1,3 per cent and 2,3 per cent respectively.

Nominal GDP estimated at R3,8 trillion for the year 2014

The nominal gross domestic product at market prices in 2014 was R3,8 trillion, which is R262 billion more than in 2013.

The most notable performances were as follows:

- Finance, real estate and business services expanded by R56 billion to R700 billion;
- General government services expanded by R46 billion to R578 billion;
- The wholesale, retail and motor trade; catering and accommodation industry expanded by R34 billion to R505 billion;
- The manufacturing industry expanded by R32 billion to R452 billion; and
- The transport, storage and communication industry expanded by R22 billion to R340 billion.

Structure of the economy

The largest industries, as measured by their nominal value added in 2014, were as follows:

- Finance, real estate and business services – 20,5 per cent;
- General government – 17,0 per cent;
- Wholesale, retail and motor trade; catering and accommodation – 14,8 per cent; and
- Manufacturing – 13,3 per cent.

PJ Lehohla
Statistician-General

NOTES

Forthcoming issues	Issue	Expected date of publications
	First quarter of 2015	26 May 2015
	Second quarter of 2015	25 August 2015
	Third quarter of 2015	24 November 2015
	Fourth quarter of 2015	23 February 2016
Methodology	Statistics South Africa (Stats SA) is responsible for compiling the production side of the national accounts, while the South African Reserve Bank (SARB) is responsible for compiling the expenditure side of the national accounts, as well as income and savings and the balance of payments. The SARB will release its estimates on 17 March 2015.	
Changes in the next issue	The statistical release containing the GDP estimates for the first quarter of 2015 will be published on Tuesday, 26 May 2015 and will include the estimates for the National Accounting Matrix (NAM) for the reference years 2010, 2011, 2012 and 2013.	
Supply and use tables	Supply and use tables (65 industries by 105 products) are available in excel format on the website for the period 2010 - 2013.	

THE TABLES

This statistical release includes 7 tables that relate to estimates of nominal and real GDP. Table A provides an overview of the various tables and their contents.

Table A – Descriptions of series of tables

Table number	Table description
Tables 1 to 2	Tables 1 and 2 show values added by industry at constant 2010 basic prices, in Rand million and as percentage changes from the same quarter in the previous year.
Tables 3 to 4	Tables 3 and 4 contain seasonally adjusted and annualised values added at constant 2010 basic prices by industry, in Rand million and as annualised percentage changes from the previous quarter.
Tables 5 to 7	Tables 5 to 7 present quarterly estimates at current prices of values added by industry and GDP (Table 5), of compensation of employees (Table 6) and gross operating surplus and net other taxes on production (Table 7) by industry.

Table 1 - Quarterly value added by industry and gross domestic product at constant 2010 prices (R million)

Year	Quarter	Agriculture, forestry and fishing	Mining and quarrying	Manufacturing	Electricity, gas and water	Construction	Wholesale, retail and motor trade; catering and accommodation	Transport, storage and communication	Finance, real estate and business services	General government services	Personal services	Total value added at basic prices	Taxes less subsidies on products	GDP at market prices	Total value added at basic prices excluding agriculture
2005		57 695	246 685	330 306	65 450	62 281	315 210	193 334	412 149	335 265	129 535	2 140 471	218 873	2 359 516	2 082 776
2006		54 544	245 224	351 572	67 688	68 780	333 999	203 224	451 896	345 531	136 298	2 258 757	232 539	2 491 296	2 204 213
2007		56 168	243 662	370 389	70 000	79 455	352 698	218 488	484 675	361 636	143 807	2 380 979	243 862	2 624 841	2 324 811
2008		67 072	230 663	378 964	67 522	87 300	358 880	226 136	511 716	381 768	149 216	2 459 238	249 363	2 708 601	2 392 166
2009		65 802	218 830	338 692	66 337	94 759	354 870	225 712	517 114	393 921	148 015	2 424 053	242 887	2 666 940	2 358 251
2010		65 605	230 350	358 699	67 940	95 453	370 581	229 499	523 526	404 647	148 561	2 494 860	253 148	2 748 008	2 429 256
2011		66 464	228 645	369 261	68 879	95 809	384 768	236 439	544 997	422 695	152 163	2 570 121	266 166	2 836 287	2 503 657
2012		66 861	221 972	376 126	68 801	97 804	398 585	242 233	561 079	437 734	155 295	2 626 489	272 758	2 899 247	2 559 629
2013		67 880	230 908	378 933	68 375	100 468	405 983	247 062	578 127	451 214	158 167	2 687 117	276 272	2 963 389	2 619 237
2014		71 659	227 260	379 089	67 765	103 358	411 083	252 648	591 019	464 911	160 411	2 729 203	279 373	3 008 576	2 657 544
2005	1	11 051	63 571	76 595	15 589	14 810	72 273	46 194	102 051	82 035	31 914	512 748	52 399	565 183	501 698
	2	20 247	62 328	81 418	16 300	15 227	73 933	47 179	102 217	83 824	32 225	532 623	54 544	587 222	512 376
	3	18 072	61 527	86 326	16 744	15 757	77 419	49 469	103 149	84 563	32 764	544 772	55 532	600 319	526 699
	4	8 325	59 260	85 969	16 818	16 487	91 585	50 492	104 732	84 843	32 632	550 328	56 399	606 792	542 003
2006	1	11 298	60 131	81 925	16 031	16 393	76 191	48 332	108 259	85 599	33 825	537 985	55 914	593 899	526 687
	2	18 266	60 856	85 868	16 836	16 803	78 374	49 487	111 990	85 929	33 927	558 336	57 129	615 465	540 070
	3	15 860	61 270	91 141	17 397	17 396	82 255	52 392	114 925	86 713	34 270	573 621	58 502	632 123	557 761
	4	9 120	62 967	92 637	17 424	18 188	97 179	53 013	116 722	87 290	34 276	588 815	60 994	649 809	579 696
2007	1	11 701	61 301	87 770	16 610	18 743	81 001	52 289	118 779	88 815	36 139	573 149	58 952	632 101	561 448
	2	18 877	60 768	90 786	17 328	19 202	83 089	53 319	119 611	89 824	36 360	589 164	59 956	649 120	570 287
	3	16 247	61 091	94 519	18 092	19 850	87 014	55 962	121 965	90 891	36 350	601 981	61 528	663 509	585 734
	4	9 344	60 503	97 314	17 970	21 660	101 594	56 918	124 320	92 106	34 957	616 686	63 426	680 112	607 342
2008	1	14 448	56 014	90 119	16 087	20 925	85 187	54 392	127 008	93 530	37 563	595 273	61 023	656 296	580 825
	2	22 624	58 711	96 634	16 579	21 283	85 957	55 386	127 417	94 657	38 015	617 264	62 159	679 423	594 641
	3	19 281	57 802	98 624	17 839	21 920	86 367	58 001	128 211	96 279	37 755	622 080	62 949	685 029	602 798
	4	10 718	58 136	93 587	17 016	23 172	101 370	58 357	129 080	97 302	35 884	624 622	63 232	687 854	613 903
2009	1	14 122	52 488	80 619	15 694	23 052	84 232	54 584	129 560	98 060	37 176	589 587	59 467	649 054	575 466
	2	21 764	54 873	81 909	16 345	23 089	84 202	55 251	129 156	98 558	37 245	602 392	59 485	661 877	580 627
	3	18 713	55 384	87 369	17 222	23 657	86 310	57 750	128 918	98 604	37 161	611 088	60 776	671 864	592 375
	4	11 203	56 087	88 796	17 076	24 961	100 127	58 126	129 480	98 699	36 433	620 987	63 159	684 146	609 784
2010	1	14 236	57 311	83 985	16 148	23 760	86 088	54 784	130 988	99 297	36 859	603 457	61 073	664 530	589 221
	2	22 159	54 667	89 493	16 780	23 637	87 915	56 121	131 110	100 769	37 281	619 933	62 145	682 078	597 774
	3	18 301	58 679	92 553	17 526	23 495	90 554	59 041	130 730	101 641	37 434	629 952	64 038	693 990	611 652
	4	10 908	59 694	92 668	17 485	24 559	106 024	59 552	130 698	102 940	36 989	641 517	65 892	707 409	630 609
2011	1	14 132	57 526	88 651	16 475	23 415	89 199	56 373	134 387	103 843	38 136	622 137	63 906	686 043	608 005
	2	22 131	58 250	90 896	17 138	23 633	90 781	57 927	135 264	105 207	38 295	639 522	65 186	704 708	617 392
	3	18 839	56 240	94 434	17 709	23 812	94 123	60 692	137 589	106 150	38 078	647 667	67 341	715 008	628 828
	4	11 362	56 629	95 280	17 557	24 949	110 666	61 447	137 757	107 495	37 653	660 795	69 733	730 528	649 433
2012	1	14 678	52 474	89 030	16 528	24 218	93 219	58 067	140 279	107 790	38 841	635 125	66 310	701 435	620 446
	2	23 269	58 105	92 477	17 101	24 025	94 446	59 481	140 046	108 903	39 438	657 289	67 361	724 650	634 021
	3	17 973	55 999	96 301	17 688	24 154	97 258	62 036	140 459	109 957	39 164	660 989	68 785	729 774	643 016
	4	10 941	55 395	98 319	17 484	25 407	113 662	62 649	140 295	111 084	37 851	673 087	70 302	743 389	662 146
2013	1	15 239	54 676	88 826	16 059	24 799	94 982	59 180	142 945	111 476	39 398	647 581	66 740	714 321	632 342
	2	24 611	57 304	94 828	17 081	24 873	96 358	60 525	144 066	112 340	40 057	672 043	68 493	740 536	647 433
	3	17 331	57 913	95 915	17 779	24 957	98 941	63 404	144 800	112 993	39 906	673 940	69 290	743 230	656 609
	4	10 700	61 015	99 363	17 456	25 839	115 702	63 952	146 316	114 405	38 805	693 553	71 749	765 302	682 853
2014	1	14 903	53 992	90 469	16 147	25 580	96 658	60 215	146 869	114 973	40 074	659 880	67 983	727 863	644 977
	2	26 202	56 852	93 384	16 858	25 558	97 136	61 995	146 927	116 138	40 592	681 643	68 591	750 234	655 441
	3	19 400	56 387	95 624	17 464	25 635	100 449	64 829	147 963	116 595	40 476	684 821	70 150	754 971	665 421
	4	11 154	60 029	99 613	17 296	26 585	116 840	65 608	149 260	117 205	39 269	702 859	72 649	775 508	691 706

Table 2 - Percentage change in the quarterly value added by industry and gross domestic product at constant 2010 prices

Year ^{1/}	Quarter ^{2/}	Agriculture, forestry and fishing	Mining and quarrying	Manufacturing	Electricity, gas and water	Construction	Wholesale, retail and motor trade; catering and accommodation	Transport, storage and communication	Finance, real estate and business services	General government services	Personal services	Total value added at basic prices	Taxes less subsidies on products	GDP at market prices	Total value added at basic prices excluding agriculture
2005		2,8	1,0	6,2	5,3	11,9	7,0	5,3	5,7	4,3	3,8	5,3	5,0	5,3	5,4
2006		-5,5	-0,6	6,4	3,4	10,4	6,0	5,1	9,6	3,1	5,2	5,5	6,2	5,6	5,8
2007		3,0	-0,6	5,4	3,4	15,5	5,6	7,5	7,3	4,7	5,5	5,4	4,9	5,4	5,5
2008		19,4	-5,3	2,3	-3,5	9,9	1,8	3,5	5,6	5,6	3,8	3,3	2,3	3,2	2,9
2009		-1,9	-5,1	-10,6	-1,8	8,5	-1,1	-0,2	1,1	3,2	-0,8	-1,4	-2,6	-1,5	-1,4
2010		-0,3	5,3	5,9	2,4	0,7	4,4	1,7	1,2	2,7	0,4	2,9	4,2	3,0	3,0
2011		1,3	-0,7	2,9	1,4	0,4	3,8	3,0	4,1	4,5	2,4	3,0	5,1	3,2	3,1
2012		0,6	-2,9	1,9	-0,1	2,1	3,6	2,5	3,0	3,6	2,1	2,2	2,5	2,2	2,2
2013		1,5	4,0	0,7	-0,6	2,7	1,9	2,0	3,0	3,1	1,8	2,3	1,3	2,2	2,3
2014		5,6	-1,6	0,0	-0,9	2,9	1,3	2,3	2,2	3,0	1,4	1,6	1,1	1,5	1,5
2005	1	15,2	4,2	3,6	5,3	11,8	7,6	5,7	5,6	3,9	4,9	5,4	5,5	5,4	5,2
	2	-7,2	2,4	7,2	5,2	12,3	6,9	5,7	5,7	4,6	3,8	5,2	5,3	5,2	5,7
	3	9,6	-1,9	7,0	3,9	12,0	7,1	5,1	6,1	4,9	3,3	5,5	5,0	5,5	5,4
	4	1,4	-0,6	6,8	7,0	11,6	6,7	4,8	5,5	3,8	3,1	5,1	4,1	5,0	5,2
2006	1	2,2	-5,4	7,0	2,8	10,7	5,4	4,6	6,1	4,3	6,0	4,9	6,7	5,1	5,0
	2	-9,8	-2,4	5,5	3,3	10,4	6,0	4,9	9,6	2,5	5,3	4,8	4,7	4,8	5,4
	3	-12,2	-0,4	5,6	3,9	10,4	6,2	5,9	11,4	2,5	4,6	5,3	5,3	5,3	5,9
	4	9,5	6,3	7,8	3,6	10,3	6,1	5,0	11,4	2,9	5,0	7,0	8,1	7,1	7,0
2007	1	3,6	1,9	7,1	3,6	14,3	6,3	8,2	9,7	3,8	6,8	6,5	5,4	6,4	6,6
	2	3,3	-0,1	5,7	2,9	14,3	6,0	7,7	6,8	4,5	7,2	5,5	4,9	5,5	5,6
	3	2,4	-0,3	3,7	4,0	14,1	5,8	6,8	6,1	4,8	6,1	4,9	5,2	5,0	5,0
	4	2,5	-3,9	5,0	3,1	19,1	4,5	7,4	6,5	5,5	2,0	4,7	4,0	4,7	4,8
2008	1	23,5	-8,6	2,7	-3,1	11,6	5,2	4,0	6,9	5,3	3,9	3,9	3,5	3,8	3,5
	2	19,8	-3,4	6,4	-4,3	10,8	3,5	3,9	6,5	5,4	4,6	4,8	3,7	4,7	4,3
	3	18,7	-5,4	4,3	-1,4	10,4	-0,7	3,6	5,1	5,9	3,9	3,3	2,3	3,2	2,9
	4	14,7	-3,9	-3,8	-5,3	7,0	-0,2	2,5	3,8	5,6	2,7	1,3	-0,3	1,1	1,1
2009	1	-2,3	-6,3	-10,5	-2,4	10,2	-1,1	0,4	2,0	4,8	-1,0	-1,0	-2,5	-1,1	-0,9
	2	-3,8	-6,5	-15,2	-1,4	8,5	-2,0	-0,2	1,4	4,1	-2,0	-2,4	-4,3	-2,6	-2,4
	3	-2,9	-4,2	-11,4	-3,5	7,9	-0,1	-0,4	0,6	2,4	-1,6	-1,8	-3,5	-1,9	-1,7
	4	4,5	-3,5	-5,1	0,4	7,7	-1,2	-0,4	0,3	1,4	1,5	-0,6	-0,1	-0,5	-0,7
2010	1	0,8	9,2	4,2	2,9	3,1	2,2	0,4	1,1	1,3	-0,9	2,4	2,7	2,4	2,4
	2	1,8	-0,4	9,3	2,7	2,4	4,4	1,6	1,5	2,2	0,1	2,9	4,5	3,1	3,0
	3	-2,2	5,9	5,9	1,8	-0,7	4,9	2,2	1,4	3,1	0,7	3,1	5,4	3,3	3,3
	4	-2,6	6,4	4,4	2,4	-1,6	5,9	2,5	0,9	4,3	1,5	3,3	4,3	3,4	3,4
2011	1	-0,7	0,4	5,6	2,0	-1,5	3,6	2,9	2,6	4,6	3,5	3,1	4,6	3,2	3,2
	2	-0,1	6,6	1,6	2,1	0,0	3,3	3,2	3,2	4,4	2,7	3,2	4,9	3,3	3,3
	3	2,9	-4,2	2,0	1,0	1,4	3,9	2,8	5,2	4,4	1,7	2,8	5,2	3,0	2,8
	4	4,2	-5,1	2,8	0,4	1,6	4,4	3,2	5,4	4,4	1,8	3,0	5,8	3,3	3,0
2012	1	3,9	-8,8	0,4	0,3	3,4	4,5	3,0	4,4	3,8	1,8	2,1	3,8	2,2	2,0
	2	5,1	-0,2	1,7	-0,2	1,7	4,0	2,7	3,5	3,5	3,0	2,8	3,3	2,8	2,7
	3	-4,6	-0,4	2,0	-0,1	1,4	3,3	2,2	2,1	3,6	2,9	2,1	2,1	2,1	2,3
	4	-3,7	-2,2	3,2	-0,4	1,8	2,7	2,0	1,8	3,3	0,5	1,9	0,8	1,8	2,0
2013	1	3,8	4,2	-0,2	-2,8	2,4	1,9	1,9	1,9	3,4	1,4	2,0	0,6	1,8	1,9
	2	5,8	-1,4	2,5	-0,1	3,5	2,0	1,8	2,9	3,2	1,6	2,2	1,7	2,2	2,1
	3	-3,6	3,4	-0,4	0,5	3,3	1,7	2,2	3,1	2,8	1,9	2,0	0,7	1,8	2,1
	4	-2,2	10,1	1,1	-0,2	1,7	1,8	2,1	4,3	3,0	2,5	3,0	2,1	2,9	3,1
2014	1	-2,2	-1,3	1,8	0,5	3,1	1,8	1,7	2,7	3,1	1,7	1,9	1,9	1,9	2,0
	2	6,5	-0,8	-1,5	-1,3	2,8	0,8	2,4	2,0	3,4	1,3	1,4	0,1	1,3	1,2
	3	11,9	-2,6	-0,3	-1,8	2,7	1,5	2,2	2,2	3,2	1,4	1,6	1,2	1,6	1,3
	4	4,2	-1,6	0,3	-0,9	2,9	1,0	2,6	2,0	2,4	1,2	1,3	1,3	1,3	1,3

1/ The percentage change is the growth rate from the previous year.

2/ The percentage change is the growth rate for a given quarter compared with the same quarter in the previous year.

Table 3 - Seasonally adjusted and annualised quarterly value added by industry and gross domestic product at constant 2010 prices (R million)

Year	Quarter	Agriculture, forestry and fishing	Mining and quarrying	Manufacturing	Electricity, gas and water	Construction	Wholesale, retail and motor trade; catering and accommodation	Transport, storage and communication	Finance, real estate and business services	General government services	Personal services	Total value added at basic prices	Taxes less subsidies on products	GDP at market prices	Total value added at basic prices excluding agriculture
2005		57 695	246 685	330 306	65 450	62 281	315 210	193 334	412 149	335 265	129 535	2 140 471	218 873	2 359 516	2 082 776
2006		54 544	245 224	351 572	67 688	68 780	333 999	203 224	451 896	345 531	136 298	2 258 757	232 539	2 491 296	2 204 213
2007		56 168	243 662	370 389	70 000	79 455	352 698	218 488	484 675	361 636	143 807	2 380 979	243 862	2 624 841	2 324 811
2008		67 072	230 663	378 964	67 522	87 300	358 880	226 136	511 716	381 768	149 216	2 459 238	249 363	2 708 601	2 392 166
2009		65 802	218 830	338 692	66 337	94 759	354 870	225 712	517 114	393 921	148 015	2 424 053	242 887	2 666 940	2 358 251
2010		65 605	230 350	358 699	67 940	95 453	370 581	229 499	523 526	404 647	148 561	2 494 860	253 148	2 748 008	2 429 256
2011		66 464	228 645	369 261	68 879	95 809	384 768	236 439	544 997	422 695	152 163	2 570 121	266 166	2 836 287	2 503 657
2012		66 861	221 972	376 126	68 801	97 804	398 585	242 233	561 079	437 734	155 295	2 626 489	272 758	2 899 247	2 559 629
2013		67 880	230 908	378 933	68 375	100 468	405 983	247 062	578 127	451 214	158 167	2 687 117	276 272	2 963 389	2 619 237
2014		71 659	227 260	379 089	67 765	103 358	411 083	252 648	591 019	464 911	160 411	2 729 203	279 373	3 008 576	2 657 544
2005	1	57 651	249 435	317 374	64 400	59 555	307 921	189 319	401 944	331 394	127 039	2 094 572	213 768	2 308 439	2 036 920
	2	57 550	247 452	329 673	65 003	61 306	312 587	192 108	409 622	335 259	128 846	2 131 483	218 175	2 349 865	2 073 933
	3	57 688	245 616	337 229	65 508	63 245	317 055	194 706	417 132	337 191	130 445	2 160 509	221 183	2 381 908	2 102 821
	4	57 891	244 238	336 951	66 890	65 015	323 278	197 203	419 898	337 217	131 809	2 175 322	222 368	2 397 852	2 117 430
2006	1	59 248	239 460	341 608	67 367	66 089	326 748	199 980	434 909	341 924	134 505	2 211 839	227 713	2 439 552	2 152 591
	2	54 400	243 389	348 131	67 554	67 884	331 597	202 461	447 441	343 992	135 825	2 242 675	231 525	2 474 200	2 188 275
	3	52 505	246 930	354 985	67 693	69 730	336 451	204 462	458 853	346 693	137 004	2 275 308	233 065	2 508 373	2 222 803
	4	52 021	251 120	361 563	68 139	71 417	341 197	205 995	466 381	349 515	137 858	2 305 206	237 853	2 543 059	2 253 185
2007	1	53 679	250 885	366 999	69 177	75 089	346 130	211 208	475 258	355 482	140 488	2 344 394	239 956	2 584 350	2 290 715
	2	55 597	243 352	368 686	69 790	78 387	350 629	216 892	478 039	358 892	142 614	2 362 878	242 652	2 605 530	2 307 280
	3	56 449	242 207	368 732	70 477	80 139	355 031	221 409	488 037	363 586	144 864	2 390 931	245 134	2 636 065	2 334 481
	4	58 948	238 208	377 140	70 556	84 205	359 001	224 444	497 366	368 584	147 262	2 425 714	247 706	2 673 420	2 366 766
2008	1	62 508	228 987	376 366	67 409	84 456	362 441	224 895	506 970	374 076	147 932	2 436 041	248 608	2 684 649	2 373 532
	2	65 039	234 898	391 090	67 000	86 200	360 428	225 642	509 822	378 246	148 496	2 466 862	250 563	2 717 425	2 401 823
	3	69 498	229 548	383 877	69 094	88 983	356 396	226 899	513 568	385 261	149 817	2 472 943	250 975	2 723 918	2 403 445
	4	71 241	229 221	364 522	66 585	89 561	356 256	227 108	516 504	389 489	150 620	2 461 106	247 306	2 708 412	2 389 865
2009	1	69 882	214 554	340 102	65 803	93 103	355 457	225 758	516 388	391 833	150 576	2 423 457	242 825	2 666 282	2 353 575
	2	66 646	221 159	330 873	66 090	93 662	353 477	225 152	515 602	394 400	149 181	2 416 242	240 889	2 657 131	2 349 596
	3	64 205	218 311	337 512	66 634	95 651	354 689	225 583	516 722	394 563	147 421	2 421 290	242 003	2 663 293	2 357 085
	4	62 477	221 301	346 280	66 820	96 620	355 858	226 355	519 744	394 888	144 883	2 435 225	245 831	2 681 056	2 372 748
2010	1	63 003	231 109	352 735	67 819	95 730	361 160	227 029	521 462	397 571	146 336	2 463 954	248 706	2 712 660	2 400 951
	2	64 583	217 540	360 345	67 784	95 254	368 103	228 783	524 164	403 208	148 184	2 477 948	251 331	2 729 279	2 413 364
	3	66 719	232 482	358 704	67 594	95 559	373 440	230 230	524 117	406 628	149 321	2 504 794	255 075	2 759 869	2 438 076
	4	68 114	240 273	363 013	68 558	95 261	379 614	231 955	524 361	411 181	150 411	2 532 741	257 480	2 790 221	2 464 627
2011	1	67 798	235 878	372 629	68 933	94 310	380 337	233 902	534 194	415 380	151 058	2 554 420	261 480	2 815 900	2 486 621
	2	66 434	234 146	367 590	69 046	95 281	383 238	236 136	541 569	420 828	151 889	2 566 157	264 653	2 830 810	2 499 723
	3	65 944	222 756	366 642	68 705	96 340	386 360	237 114	549 929	424 602	152 352	2 570 744	267 478	2 838 222	2 504 800
	4	65 679	221 803	370 183	68 833	97 305	389 138	238 604	554 296	429 970	153 353	2 589 163	271 053	2 860 216	2 523 484
2012	1	65 858	215 798	375 617	69 021	96 760	393 652	240 253	558 239	431 356	154 055	2 600 609	271 431	2 872 040	2 534 751
	2	66 630	228 587	374 498	68 431	97 054	397 508	241 854	560 730	435 104	154 863	2 625 259	272 982	2 898 241	2 558 629
	3	67 017	223 740	375 211	68 820	97 976	400 317	242 757	561 990	439 835	155 705	2 633 369	273 534	2 906 903	2 566 352
	4	67 938	219 765	379 178	68 932	99 426	402 861	244 068	563 357	444 641	156 556	2 646 723	273 085	2 919 808	2 578 785
2013	1	67 436	227 241	371 599	68 098	99 234	403 733	245 297	569 964	446 096	157 019	2 655 717	273 981	2 929 698	2 588 280
	2	67 253	224 623	382 014	68 603	100 486	405 887	246 253	576 939	449 165	158 069	2 679 291	277 099	2 956 390	2 612 039
	3	67 850	231 210	375 521	68 926	100 634	406 230	247 860	580 901	452 264	158 551	2 689 945	275 286	2 965 231	2 622 096
	4	68 983	240 559	386 599	67 873	101 518	408 081	248 838	584 704	457 331	159 029	2 723 514	278 722	3 002 236	2 654 531
2014	1	69 794	225 453	380 286	67 911	102 444	409 632	249 719	586 677	459 992	159 624	2 711 533	278 959	2 990 492	2 641 738
	2	70 757	223 727	376 429	67 821	102 984	409 376	252 096	588 411	464 452	160 220	2 716 273	277 787	2 994 060	2 645 516
	3	72 380	225 875	375 514	67 637	103 550	412 821	253 493	591 922	466 930	160 736	2 730 859	278 644	3 009 503	2 658 479
	4	73 705	233 985	384 126	67 692	104 454	412 503	255 283	597 066	468 270	161 064	2 758 148	282 102	3 040 250	2 684 444

Table 4 - Annualised percentage change in the seasonally adjusted quarterly value added by industry and gross domestic product at constant 2010 prices

Year ^{1/}	Quarter ^{2/}	Agriculture, forestry and fishing	Mining and quarrying	Manufacturing	Electricity, gas and water	Construction	Wholesale, retail and motor trade; catering and accommodation	Transport, storage and communication	Finance, real estate and business services	General government services	Personal services	Total value added at basic prices	Taxes less subsidies on products	GDP at market prices	Total value added at basic prices excluding agriculture
2005		2,8	1,0	6,2	5,3	11,9	7,0	5,3	5,7	4,3	3,8	5,3	5,0	5,3	5,4
2006		-5,5	-0,6	6,4	3,4	10,4	6,0	5,1	9,6	3,1	5,2	5,5	6,2	5,6	5,8
2007		3,0	-0,6	5,4	3,4	15,5	5,6	7,5	7,3	4,7	5,5	5,4	4,9	5,4	5,5
2008		19,4	-5,3	2,3	-3,5	9,9	1,8	3,5	5,6	5,6	3,8	3,3	2,3	3,2	2,9
2009		-1,9	-5,1	-10,6	-1,8	8,5	-1,1	-0,2	1,1	3,2	-0,8	-1,4	-2,6	-1,5	-1,4
2010		-0,3	5,3	5,9	2,4	0,7	4,4	1,7	1,2	2,7	0,4	2,9	4,2	3,0	3,0
2011		1,3	-0,7	2,9	1,4	0,4	3,8	3,0	4,1	4,5	2,4	3,0	5,1	3,2	3,1
2012		0,6	-2,9	1,9	-0,1	2,1	3,6	2,5	3,0	3,6	2,1	2,2	2,5	2,2	2,2
2013		1,5	4,0	0,7	-0,6	2,7	1,9	2,0	3,0	3,1	1,8	2,3	1,3	2,2	2,3
2014		5,6	-1,6	0,0	-0,9	2,9	1,3	2,3	2,2	3,0	1,4	1,6	1,1	1,5	1,5
2005	1	-2,2	13,1	-0,1	0,1	11,3	5,0	4,7	4,1	7,2	4,0	4,5	0,8	4,1	4,7
	2	-0,7	-3,1	16,4	3,8	12,3	6,2	6,0	7,9	4,7	5,8	7,2	8,5	7,4	7,5
	3	1,0	-2,9	9,5	3,1	13,3	5,8	5,5	7,5	2,3	5,1	5,6	5,6	5,6	5,7
	4	1,4	-2,2	-0,3	8,7	11,7	8,1	5,2	2,7	0,0	4,2	2,8	2,2	2,7	2,8
2006	1	9,7	-7,6	5,6	2,9	6,8	4,4	5,8	15,1	5,7	8,4	6,9	10,0	7,1	6,8
	2	-28,9	6,7	7,9	1,1	11,3	6,1	5,1	12,0	2,4	4,0	5,7	6,9	5,8	6,8
	3	-13,2	5,9	8,1	0,8	11,3	6,0	4,0	10,6	3,2	3,5	5,9	2,7	5,6	6,5
	4	-3,6	7,0	7,6	2,7	10,0	5,8	3,0	6,7	3,3	2,5	5,4	8,5	5,6	5,6
2007	1	13,4	-0,4	6,2	6,2	22,2	5,9	10,5	7,8	7,0	7,9	7,0	3,6	6,7	6,8
	2	15,1	-11,5	1,9	3,6	18,8	5,3	11,2	2,4	3,9	6,2	3,2	4,6	3,3	2,9
	3	6,3	-1,9	0,0	4,0	9,2	5,1	8,6	8,6	5,3	6,5	4,8	4,2	4,8	4,8
	4	18,9	-6,4	9,4	0,5	21,9	4,5	5,6	7,9	5,6	6,8	5,9	4,3	5,8	5,6
2008	1	26,4	-14,6	-0,8	-16,7	1,2	3,9	0,8	8,0	6,1	1,8	1,7	1,5	1,7	1,1
	2	17,2	10,7	16,6	-2,4	8,5	-2,2	1,3	2,3	4,5	1,5	5,2	3,2	5,0	4,9
	3	30,4	-8,8	-7,2	13,1	13,6	-4,4	2,2	3,0	7,6	3,6	1,0	0,7	1,0	0,3
	4	10,4	-0,6	-18,7	-13,8	2,6	-0,2	0,4	2,3	4,5	2,2	-1,9	-5,7	-2,3	-2,2
2009	1	-7,4	-23,2	-24,2	-4,6	16,8	-0,9	-2,4	-0,1	2,4	-0,1	-6,0	-7,1	-6,1	-5,9
	2	-17,3	12,9	-10,4	1,8	2,4	-2,2	-1,1	-0,6	2,6	-3,7	-1,2	-3,2	-1,4	-0,7
	3	-13,9	-5,1	8,3	3,3	8,8	1,4	0,8	0,9	0,2	-4,6	0,8	1,9	0,9	1,3
	4	-10,3	5,6	10,8	1,1	4,1	1,3	1,4	2,4	0,3	-6,7	2,3	6,5	2,7	2,7
2010	1	3,4	18,9	7,7	6,1	-3,6	6,1	1,2	1,3	2,7	4,1	4,8	4,8	4,8	4,8
	2	10,4	-21,5	8,9	-0,2	-2,0	7,9	3,1	2,1	5,8	5,1	2,3	4,3	2,5	2,1
	3	13,9	30,4	-1,8	-1,1	1,3	5,9	2,6	0,0	3,4	3,1	4,4	6,1	4,6	4,2
	4	8,6	14,1	4,9	5,8	-1,2	6,8	3,0	0,2	4,6	3,0	4,5	3,8	4,5	4,4
2011	1	-1,8	-7,1	11,0	2,2	-3,9	0,8	3,4	7,7	4,1	1,7	3,5	6,4	3,7	3,6
	2	-7,8	-2,9	-5,3	0,7	4,2	3,1	3,9	5,6	5,4	2,2	1,9	4,9	2,1	2,1
	3	-2,9	-18,1	-1,0	-2,0	4,5	3,3	1,7	6,3	3,6	1,2	0,7	4,3	1,1	0,8
	4	-1,6	-1,7	3,9	0,7	4,1	2,9	2,5	3,2	5,2	2,7	2,9	5,5	3,1	3,0
2012	1	1,1	-10,4	6,0	1,1	-2,2	4,7	2,8	2,9	1,3	1,8	1,8	0,6	1,7	1,8
	2	4,8	25,9	-1,2	-3,4	1,2	4,0	2,7	1,8	3,5	2,1	3,8	2,3	3,7	3,8
	3	2,3	-8,2	0,8	2,3	3,9	2,9	1,5	0,9	4,4	2,2	1,2	0,8	1,2	1,2
	4	5,6	-6,9	4,3	0,7	6,1	2,6	2,2	1,0	4,4	2,2	2,0	-0,7	1,8	2,0
2013	1	-2,9	14,3	-7,8	-4,8	-0,8	0,9	2,0	4,8	1,3	1,2	1,4	1,3	1,4	1,5
	2	-1,1	-4,5	11,7	3,0	5,1	2,2	1,6	5,0	2,8	2,7	3,6	4,6	3,7	3,7
	3	3,6	12,3	-6,6	1,9	0,6	0,3	2,6	2,8	2,8	1,2	1,6	-2,6	1,2	1,5
	4	6,9	17,2	12,3	-6,0	3,6	1,8	1,6	2,6	4,6	1,2	5,1	5,1	5,1	5,0
2014	1	4,8	-22,8	-6,4	0,2	3,7	1,5	1,4	1,4	2,3	1,5	-1,7	0,3	-1,6	-1,9
	2	5,6	-3,0	-4,0	-0,5	2,1	-0,2	3,9	1,2	3,9	1,5	0,7	-1,7	0,5	0,6
	3	9,5	3,9	-1,0	-1,1	2,2	3,4	2,2	2,4	2,2	1,3	2,2	1,2	2,1	2,0
	4	7,5	15,2	9,5	0,3	3,5	-0,3	2,9	3,5	1,2	0,8	4,1	5,1	4,1	4,0

1/ The percentage change is the growth rate from the previous year.

2/ The annualised percentage change is the growth rate for a given quarter from the previous quarter and compounded to an annual rate.

Table 5 - Quarterly value added by industry and gross domestic product at current prices (R million)

Year	Quarter	Agriculture, forestry and fishing	Mining and quarrying	Manufacturing	Electricity, gas and water	Construction	Wholesale, retail, motor trade and accommodation	Transport, storage and communication	Finance, real estate and business services	General government services	Personal services	Total value added at basic prices	Taxes less subsidies on products	GDP at market prices
2005		39 172	107 400	266 515	28 417	42 519	208 034	159 554	306 093	217 665	93 870	1 469 239	170 015	1 639 254
2006		42 884	132 843	269 769	30 849	49 117	231 999	196 054	347 755	236 104	104 847	1 642 222	197 179	1 839 401
2007		55 762	157 672	302 991	33 278	65 631	258 908	210 995	418 980	264 777	115 729	1 884 722	224 779	2 109 501
2008		67 743	197 643	341 697	37 779	92 953	297 518	221 549	446 756	309 629	123 923	2 137 190	231 873	2 369 063
2009		68 044	200 824	341 658	53 473	95 753	317 655	223 427	482 872	356 819	136 621	2 277 146	230 531	2 507 677
2010		65 605	230 350	358 699	67 940	95 453	370 580	229 499	523 526	404 647	148 561	2 494 860	253 148	2 748 008
2011		68 591	262 391	363 174	86 905	103 302	405 860	292 731	565 056	449 360	161 653	2 725 022	299 928	3 024 950
2012		70 245	271 410	385 654	105 773	111 040	441 038	292 841	606 031	482 144	173 466	2 939 640	322 902	3 262 542
2013		73 458	284 802	419 931	117 466	126 435	471 008	317 974	643 166	532 122	186 599	3 172 961	361 365	3 534 326
2014		84 662	286 607	452 326	125 378	138 917	504 854	339 930	699 531	578 030	194 260	3 404 495	391 967	3 796 462
2005	1	7 880	22 867	61 632	6 492	9 749	47 492	37 039	73 121	52 992	22 785	342 049	41 533	383 582
	2	12 669	28 098	66 019	7 272	10 759	48 079	38 212	76 048	53 277	23 270	363 702	37 683	401 385
	3	11 931	28 876	69 893	7 596	10 916	52 264	40 612	77 926	54 641	23 696	378 350	43 777	422 127
	4	6 692	27 559	68 971	7 057	11 095	60 199	43 692	78 998	56 755	24 120	385 139	47 022	432 161
2006	1	8 207	26 853	62 789	6 848	11 312	53 194	44 281	82 452	56 603	25 158	377 697	48 901	426 598
	2	12 591	31 831	65 942	7 997	12 505	54 140	47 680	85 043	56 721	26 000	400 450	44 104	444 554
	3	14 163	38 395	70 312	8 435	12 700	57 993	50 664	89 705	59 800	26 546	428 713	51 502	480 215
	4	7 923	35 764	70 726	7 568	12 600	66 672	53 429	90 555	62 980	27 143	435 361	52 672	488 033
2007	1	11 307	35 847	72 800	7 569	15 135	59 266	47 385	100 847	62 700	27 780	440 636	57 712	498 348
	2	18 452	39 667	72 692	8 682	16 687	60 524	51 335	101 041	63 964	29 206	462 250	50 694	512 944
	3	17 110	41 346	76 835	9 162	16 875	64 748	54 920	106 469	67 607	29 587	484 659	55 121	539 780
	4	8 893	40 812	80 664	7 865	16 934	74 370	57 356	110 623	70 506	29 155	497 177	61 252	558 429
2008	1	13 263	42 191	80 796	8 562	20 218	68 647	49 587	110 773	71 738	29 569	495 344	64 517	559 861
	2	24 713	51 042	83 812	9 892	23 466	71 198	54 362	108 455	74 922	31 251	533 114	53 455	586 569
	3	20 652	54 345	89 054	10 675	24 749	74 110	56 928	114 310	79 498	31 868	556 190	56 659	612 849
	4	9 115	50 065	88 035	8 649	24 520	83 563	60 672	113 218	83 471	31 235	552 542	57 242	609 784
2009	1	14 388	44 730	83 576	11 665	22 391	74 337	50 367	119 833	85 249	32 263	538 798	60 661	599 459
	2	26 596	51 115	80 795	13 558	24 978	76 272	54 839	118 113	84 718	34 569	565 553	51 275	616 828
	3	18 100	54 194	87 622	15 864	24 585	78 328	57 458	120 712	89 516	35 338	581 718	59 529	641 247
	4	8 959	50 785	89 663	12 386	23 799	88 719	60 764	124 214	97 336	34 451	591 076	59 066	650 142
2010	1	14 420	46 449	87 400	16 715	22 422	83 379	50 711	130 109	98 932	34 574	585 110	57 988	643 098
	2	28 352	58 322	86 540	18 751	24 975	90 349	56 085	128 457	97 576	37 685	627 092	60 255	687 347
	3	15 566	63 861	91 915	18 128	24 563	90 301	58 803	130 715	102 095	38 429	634 375	65 447	699 822
	4	7 267	61 718	92 844	14 347	23 493	106 552	63 900	134 245	106 044	37 873	648 283	69 458	717 741
2011	1	13 433	57 860	88 789	19 326	23 322	91 159	57 577	139 596	107 888	37 487	636 437	84 725	721 162
	2	26 274	63 796	87 169	25 677	26 833	97 822	64 229	139 007	111 356	40 220	682 382	63 101	745 483
	3	19 314	70 426	93 086	23 600	26 716	99 623	66 975	141 581	114 416	41 879	697 617	70 751	768 368
	4	9 570	70 310	94 130	18 302	26 431	117 255	69 950	144 872	115 700	42 067	708 586	81 351	789 937
2012	1	13 228	62 132	95 609	23 896	25 871	100 407	66 735	149 330	115 886	40 747	693 842	83 257	777 099
	2	29 874	68 243	93 144	31 367	29 451	106 866	72 640	149 824	117 997	43 231	742 637	70 622	813 259
	3	17 858	72 609	97 402	28 259	27 912	108 516	75 450	150 501	122 871	44 967	746 345	81 435	827 780
	4	9 285	68 426	99 499	22 251	27 805	125 249	78 016	156 376	125 390	44 520	756 817	87 588	844 405
2013	1	14 373	66 906	98 269	26 587	28 317	109 175	73 340	158 524	126 691	44 410	746 593	95 591	842 184
	2	32 879	67 896	101 068	35 068	33 325	113 595	77 853	161 691	131 403	46 429	801 207	75 982	877 189
	3	17 416	75 536	108 047	31 129	32 526	116 551	81 742	159 770	136 375	48 017	807 110	92 021	899 131
	4	8 790	74 464	112 546	24 681	32 267	131 687	85 039	163 181	137 653	47 743	818 052	97 771	915 823
2014	1	16 451	68 226	107 754	28 995	33 504	119 139	78 081	174 156	139 701	46 458	812 465	105 235	917 700
	2	35 932	67 248	109 046	37 798	37 284	122 270	83 604	169 478	143 978	48 784	855 423	81 948	937 371
	3	22 306	75 973	115 966	32 599	34 459	124 171	87 246	175 067	146 607	49 862	864 257	98 537	962 794
	4	9 973	75 159	119 560	25 985	33 670	139 273	90 999	180 830	147 744	49 157	872 350	106 247	978 597

Table 6 - Quarterly compensation of employees at current prices (R million)

Year	Quarter	Agriculture, forestry and fishing	Mining and quarrying	Manufacturing	Electricity, gas and water	Construction	Wholesale, retail and motor trade; catering and accommodation	Transport, storage and communication	Finance, real estate and business services	General government services	Personal services	Total compensation of employees
2005		12 222	42 042	121 244	12 451	20 023	92 397	51 135	114 144	181 765	60 863	708 286
2006		12 891	49 535	134 467	13 844	23 600	104 592	56 134	130 445	196 420	66 255	788 183
2007		14 709	58 221	154 326	15 460	32 229	113 750	61 219	152 782	220 257	74 786	897 740
2008		16 660	69 675	177 186	17 623	37 604	126 629	65 628	171 443	257 245	81 043	1 020 736
2009		18 391	75 601	185 106	20 006	41 938	134 301	68 776	175 084	301 744	85 246	1 106 193
2010		19 494	86 399	205 680	22 091	44 287	148 043	74 663	196 298	347 326	90 425	1 234 707
2011		19 990	95 980	218 564	26 054	47 920	162 313	82 690	218 248	388 536	97 816	1 358 111
2012		21 621	109 062	238 082	29 541	52 376	177 323	88 294	236 653	416 538	104 362	1 473 852
2013		23 120	118 281	260 722	32 430	55 990	189 364	94 677	264 570	459 691	111 801	1 610 647
2014		24 744	119 820	283 192	34 910	58 929	202 638	101 886	289 870	498 035	118 783	1 732 807
2005	1	2 958	9 899	28 732	2 795	4 300	20 429	11 227	25 467	44 347	14 924	165 078
	2	3 190	9 952	29 256	3 107	4 856	21 642	12 721	27 729	44 448	15 196	172 097
	3	3 221	10 820	29 706	3 011	5 125	23 311	13 308	29 900	45 521	15 320	179 243
	4	2 853	11 371	33 550	3 538	5 742	27 016	13 879	31 048	47 449	15 423	191 868
2006	1	3 117	11 612	31 131	3 112	5 186	23 464	12 807	29 896	47 124	16 108	183 558
	2	3 343	11 695	32 436	3 484	5 739	24 872	13 737	32 169	47 023	16 560	191 056
	3	3 373	12 638	32 969	3 373	6 034	25 873	14 265	33 754	49 685	16 693	198 657
	4	3 057	13 590	37 931	3 875	6 641	30 383	15 325	34 626	52 588	16 894	214 911
2007	1	3 573	13 567	35 285	3 402	6 568	25 204	14 060	34 856	52 183	18 220	206 918
	2	3 797	13 847	36 945	3 830	7 972	26 946	14 837	37 341	52 999	18 701	217 215
	3	3 845	14 811	37 981	3 803	8 380	28 488	15 603	39 282	56 183	18 786	227 163
	4	3 494	15 996	44 115	4 424	9 309	33 111	16 720	41 303	58 892	19 079	246 444
2008	1	4 174	16 254	40 490	3 851	7 638	28 094	15 173	40 739	59 710	20 020	236 142
	2	4 236	16 738	42 463	4 354	9 304	30 655	15 925	41 901	62 050	20 016	247 642
	3	4 259	17 785	44 023	4 399	9 918	31 601	16 905	45 279	65 877	20 339	260 386
	4	3 990	18 899	50 211	5 018	10 744	36 280	17 625	43 524	69 608	20 667	276 565
2009	1	4 688	18 216	42 490	4 299	8 608	30 034	15 630	41 531	71 482	20 972	257 949
	2	4 743	18 175	43 329	4 725	10 244	31 973	16 557	42 518	71 160	20 970	264 395
	3	4 687	19 268	46 266	5 154	10 825	34 150	17 793	46 105	75 781	21 599	281 629
	4	4 273	19 942	53 021	5 828	12 261	38 144	18 796	44 930	83 321	21 705	302 220
2010	1	4 995	20 425	47 272	4 777	9 264	32 691	17 215	46 768	84 758	22 172	290 339
	2	5 086	20 838	48 865	5 299	11 136	35 277	17 955	48 269	83 322	22 320	298 367
	3	4 949	22 638	50 494	5 611	11 256	37 278	18 999	50 716	87 632	22 887	312 460
	4	4 464	22 498	59 049	6 405	12 631	42 797	20 493	50 545	91 614	23 046	333 542
2011	1	5 083	22 483	51 227	5 765	10 141	36 578	18 568	52 213	93 044	24 057	319 158
	2	5 251	23 171	51 969	6 168	11 815	38 689	20 361	53 814	96 437	24 023	331 698
	3	5 066	24 238	53 080	6 481	12 465	40 688	20 958	56 362	99 130	25 033	343 500
	4	4 590	26 088	62 288	7 641	13 499	46 358	22 804	55 859	99 925	24 703	363 754
2012	1	5 477	25 788	55 611	6 469	11 036	40 573	19 745	58 392	99 874	25 727	348 692
	2	5 624	26 784	56 520	7 026	13 194	42 655	21 626	59 746	101 769	25 711	360 655
	3	5 503	27 199	57 952	7 399	13 475	44 386	22 354	59 423	106 279	26 677	370 646
	4	5 018	29 291	67 998	8 647	14 671	49 710	24 570	59 092	108 616	26 247	393 860
2013	1	5 800	28 140	60 768	7 175	11 990	43 604	21 429	63 657	109 463	27 623	379 650
	2	6 050	29 312	62 331	7 850	14 200	45 545	23 207	66 157	113 630	27 524	395 805
	3	5 900	29 397	63 621	7 918	14 250	47 105	23 811	66 889	117 805	28 383	405 080
	4	5 370	31 432	74 002	9 487	15 550	53 109	26 230	67 867	118 793	28 271	430 112
2014	1	6 161	26 933	66 064	7 788	12 587	46 610	22 899	69 079	120 354	29 261	407 735
	2	6 518	27 990	67 562	8 468	14 915	48 570	25 045	72 079	124 103	29 420	424 669
	3	6 329	31 477	68 787	8 493	15 000	50 570	25 591	73 068	126 248	30 209	435 771
	4	5 736	33 420	80 780	10 162	16 427	56 889	28 351	75 644	127 330	29 892	464 631

Table 7 - Quarterly gross operating surplus and net¹ other taxes on production (R million)

Year	Quarter	Agriculture, forestry and fishing	Mining and quarrying	Manufacturing	Electricity, gas and water	Construction	Wholesale, retail and motor trade; catering and accommodation	Transport, storage and communication	Finance, real estate and business services	General government services	Personal services	Total gross operating surplus
2005		26 950	65 358	145 271	15 966	22 496	115 637	108 419	191 949	35 900	33 007	760 954
2006		29 993	83 308	135 302	17 005	25 517	127 406	139 920	217 311	39 684	38 592	854 039
2007		41 053	99 451	148 665	17 818	33 402	145 157	149 776	266 197	44 520	40 943	986 982
2008		51 083	127 968	164 511	20 156	55 349	170 889	155 921	275 313	52 384	42 880	1 116 454
2009		49 653	125 224	156 552	33 467	53 815	183 354	154 651	307 788	55 075	51 375	1 170 953
2010		46 111	143 950	153 020	45 848	51 166	222 537	154 836	327 228	57 321	58 136	1 260 153
2011		48 601	166 411	144 610	60 851	55 382	243 548	176 041	346 808	60 824	63 837	1 366 912
2012		48 624	162 348	147 571	76 232	58 664	263 715	204 547	369 377	65 606	69 104	1 465 788
2013		50 338	166 521	159 208	85 036	70 445	281 644	223 297	378 596	72 431	74 798	1 562 314
2014		59 918	166 787	169 134	90 468	79 988	302 216	238 043	409 661	79 995	75 478	1 671 688
2005	1	4 922	12 968	32 900	3 697	5 449	27 063	25 813	47 654	8 645	7 860	176 971
	2	9 479	18 146	36 763	4 165	5 903	26 437	25 491	48 319	8 829	8 073	191 605
	3	8 710	18 056	40 186	4 585	5 791	28 953	27 303	48 026	9 120	8 376	199 107
	4	3 839	16 188	35 421	3 519	5 353	33 183	29 813	47 950	9 306	8 697	193 270
2006	1	5 089	15 241	31 658	3 736	6 126	29 729	31 474	52 556	9 479	9 050	194 139
	2	9 248	20 137	33 506	4 513	6 766	29 269	33 944	52 874	9 698	9 440	209 394
	3	10 790	25 757	37 343	5 063	6 666	32 120	36 399	55 951	10 115	9 853	230 056
	4	4 866	22 174	32 794	3 693	5 959	36 289	38 104	55 929	10 392	10 250	220 450
2007	1	7 734	22 280	37 515	4 167	8 567	34 062	33 325	65 991	10 517	9 561	233 718
	2	14 655	25 821	35 747	4 851	8 715	33 577	36 498	63 700	10 965	10 505	245 035
	3	13 264	26 535	38 854	5 359	8 495	36 260	39 317	67 187	11 424	10 801	257 496
	4	5 399	24 816	36 549	3 441	7 625	41 259	40 636	69 320	11 614	10 076	250 733
2008	1	9 088	25 938	40 307	4 711	12 580	40 553	34 414	70 034	12 028	9 549	259 202
	2	20 477	34 304	41 349	5 538	14 162	40 543	38 437	66 554	12 872	11 235	285 472
	3	16 393	36 560	45 030	6 276	14 831	42 509	40 023	69 031	13 621	11 529	295 804
	4	5 125	31 166	37 824	3 632	13 776	47 283	43 047	69 694	13 863	10 567	275 977
2009	1	9 701	26 514	41 087	7 366	13 783	44 303	34 736	78 302	13 767	11 291	280 850
	2	21 853	32 940	37 466	8 832	14 734	44 298	38 282	75 595	13 558	13 599	301 158
	3	13 413	34 926	41 357	10 711	13 760	44 177	39 665	74 607	13 735	13 739	300 089
	4	4 687	30 843	36 642	6 558	11 538	50 575	41 968	79 284	14 015	12 746	288 856
2010	1	9 424	26 024	40 128	11 938	13 158	50 688	33 495	83 341	14 174	12 402	294 772
	2	23 267	37 484	37 675	13 452	13 839	55 072	38 130	80 188	14 254	15 365	328 725
	3	10 617	41 223	41 421	12 517	13 307	53 023	39 803	79 999	14 463	15 542	321 915
	4	2 803	39 220	33 796	7 942	10 862	63 755	43 407	83 700	14 430	14 827	314 742
2011	1	8 350	35 377	37 562	13 561	13 181	54 581	39 009	87 383	14 844	13 430	317 279
	2	21 023	40 625	35 200	19 509	15 018	59 133	43 868	85 193	14 919	16 197	350 684
	3	14 248	46 188	40 006	17 120	14 251	58 936	46 017	85 219	15 286	16 846	354 117
	4	4 980	44 221	31 842	10 661	12 932	70 897	47 146	89 013	15 775	17 364	344 832
2012	1	7 751	36 344	39 998	17 427	14 835	59 834	46 990	90 938	16 012	15 020	345 150
	2	24 250	41 459	36 624	24 341	16 257	64 211	51 014	90 078	16 228	17 520	381 982
	3	12 355	45 410	39 450	20 860	14 437	64 130	53 096	91 078	16 592	18 290	375 699
	4	4 267	39 135	31 500	13 604	13 134	75 540	53 446	97 284	16 774	18 273	362 956
2013	1	8 573	38 766	37 501	19 412	16 327	65 571	51 912	94 867	17 228	16 787	366 943
	2	26 830	38 584	38 737	27 218	19 125	68 050	54 646	95 534	17 773	18 905	405 402
	3	11 515	46 139	44 426	23 211	18 276	69 446	57 931	92 881	18 570	19 634	402 029
	4	3 420	43 032	38 544	15 194	16 717	78 578	58 809	95 314	18 860	19 472	387 939
2014	1	10 290	41 294	41 690	21 207	20 917	72 530	55 181	105 077	19 347	17 197	404 730
	2	29 414	39 258	41 484	29 331	22 369	73 701	58 559	97 399	19 875	19 364	430 754
	3	15 977	44 496	47 179	24 107	19 459	73 602	61 655	101 999	20 359	19 653	428 486
	4	4 237	41 739	38 780	15 823	17 243	82 384	62 648	105 186	20 414	19 264	407 718

1/ Net other taxes on production equals other taxes on production minus other subsidies on production.

KEYS BETWEEN PRODUCTS USED IN THE SUPPLY AND USE TABLES AND CPC GROUPS

Table B – Description of products used in the supply and use tables

Row no.	Supply and use table description	Central Product Classification (CPC)
P1	Agriculture	011, 012, 013, 014, 015, 016, 017, 018, 019
P2	Live animals	021, 022, 023, 024, 029
P3	Forestry	031, 032
P4	Fishing	041, 042, 049
P5	Coal and lignite	110
P6	Metal ores	130, 141, 142
P7	Other minerals	120, 151, 152, 153, 154, 161, 162, 163
P8	Electricity and gas	171, 172, 173, 174
P9	Natural water	180
P10	Meat	211
P11	Fish	212
P12	Vegetables	213
P13	Fruit and nuts	214
P14	Oils and fats	215, 216, 217
P15	Dairy products	221, 222, 223
P16	Grain mill products	231
P17	Starches products	232
P18	Animal feeding	233
P19	Bakery products	234
P20	Sugar	235
P21	Confectionary products	236
P22	Pasta products	237
P23	Food n.e.c.	239
P24	Alcohol, beverages	241, 242, 243
P25	Soft drinks	244
P26	Tobacco products	250
P27	Textile fabrics	261, 262, 263, 264, 265, 266, 267, 268

Row no.	Supply and use table description	Central Product Classification (CPC)
P28	Made-up textile articles	271
P29	Carpets	272
P30	Textiles n.e.c.	273, 279
P31	Knitting fabrics	281
P32	Wearing apparel	282, 283
P33	Leather products	291, 292
P34	Footwear	293, 294, 295, 296
P35	Wood products	311, 312, 313, 314, 315, 316, 317, 319
P36	Paper products	321
P37	Printing	322, 323, 324, 325, 326, 327, 328
P38	Petroleum products	331, 332, 333, 334, 335, 336, 337
P39	Basic chemicals	341, 342, 343, 344, 345, 347, 348
P40	Fertilisers, pesticides	346
P41	Paint, related products	351
P42	Pharmaceutical products	352
P43	Soap, cleaning, perfume	353
P44	Chemical products, n.e.c.	354, 355
P45	Rubber tyres	361
P46	Other rubber products	362
P47	Plastic products	363, 364, 369
P48	Glass products	371
P49	Non-structural ceramic	372
P50	Structure non-refractory clay	373
P51	Plaster, cement	374
P52	Articles of concrete	375
P53	Non-metallic products n.e.c.	376, 379
P54	Furniture	381
P55	Jewellery	382
P56	Manufactured products n.e.c.	383, 384, 385, 386, 387, 389

Row no.	Supply and use table description	Central Product Classification (CPC)
P57	Waste, scraps	391, 392, 393, 399
P58	Iron, steel products	411, 412
P59	Non-ferrous metals	413, 414, 415, 416
P60	Structural metal products	421
P61	Tanks, reservoirs	422, 423
P62	Other fabricated metal	429
P63	Engines, turbines	431
P64	Pumps, compressors	432
P65	Bearing, gears	433
P66	Lifting equipment	435
P67	General machinery	434, 439
P68	Special machinery	441, 442, 443, 444, 445, 446, 447, 449
P69	Domestic appliances	448
P70	Office machinery	451, 452
P71	Electrical machinery	461, 462, 463, 464, 465, 469
P72	Radio, television	471, 472, 473, 474, 475, 476, 478, 479
P73	Medical appliances	481, 482, 483, 484
P74	Motor vehicles, parts	491, 492
P75	Ship and boats	493, 494
P76	Railway and trams	495
P77	Aircrafts	496
P78	Other transport equipment	499
P79	Construction	531, 532
P80	Construction services	541, 542, 543, 544, 545, 546, 547
P81	Trade services	611, 612, 621, 622, 623, 624, 625
P82	Accommodation	631, 632
P83	Catering services	633, 634
P84	Passenger transport	641, 642
P85	Freight transport	651, 652, 653

Row no.	Supply and use table description	Central Product Classification (CPC)
P86	Supporting transport services	660, 671, 672, 673, 674, 675, 676, 679
P87	Postal, courier services	681
P88	Electricity distribution	691
P89	Water distribution	692
P90	Financial services	711, 712
P91	Insurance, pension	713, 714
P92	Other financial services	715, 716
P93	Real estate services	721, 722
P94	Leasing, rental services	731, 732, 733
P95	Research, development	811, 812, 813, 814
P96	Legal, accounting	821, 822, 823, 824
P97	Other business services	831, 832, 833, 834, 835, 836, 837, 838, 839
P98	Telecommunication	841, 842, 843, 844, 845, 846
P99	Support services	851, 852, 853, 854, 855, 859, 861, 862, 863, 871, 872, 873, 881, 882, 883, 884, 885, 886, 887, 888, 889
P100	Manufacturing services n.e.c.	891, 892, 893, 894
P101	Public administration	911, 912, 913, 941, 942, 943, 944, 945, 949
P102	Education services	921, 922, 923, 924, 925, 929
P103	Health, social services	931, 932, 933, 934, 935
P104	Other services n.e.c.	951, 952, 959, 961, 962, 963, 964, 965, 966, 969, 971, 972, 973, 979, 980, 990

KEYS BETWEEN INDUSTRIES USED IN THE SUPPLY AND USE TABLES AND SIC GROUPS

Table C – Description of industries used in the supply and use tables

Col. no.	Supply and use tables description	SIC classification
I1	Agriculture, hunting and related services	11
I2	Forestry, logging and related services	12
I3	Fishing, operation of fishing hatcheries and fish farms	13
I4	Mining of coal and lignite	21
I5	Mining of gold and uranium	23
I6	Mining of metal ores	24
I7	Other mining and quarrying	25, 221
I8	Manufacturing of food products	301, 302, 303, 304
I9	Beverage, tobacco	305, 306
I10	Manufacturing of textiles	311, 312
I11	Manufacturing of wearing apparel, dressing and dyeing of fur	313, 314, 315
I12	Tanning and dressing of leather	316
I13	Manufacturing of footwear	317
I14	Manufacturing of wood and products of wood and cork, except furniture	321, 322
I15	Manufacturing of paper products	323
I16	Publishing, printing and reproduction of recorded media	324, 325, 326
I17	Manufacturing of coke oven products, petroleum refineries	331, 332
I18	Processing of nuclear fuel and manufacturing of basic chemicals	333, 334
I19	Manufacturing of chemical products and man-made fibres	335, 336
I20	Manufacturing of rubber products	337
I21	Manufacturing of plastic products	338
I22	Manufacturing of glass products	341
I23	Manufacturing of non-metallic mineral products n.e.c.	342
I24	Manufacturing of basic iron and steel, casting of metals	351, 353
I25	Manufacturing of basic precious and non-ferrous metals	352
I26	Manufacturing of fabricated metal products	354, 355

Col. no.	Supply and use tables description	SIC classification
I27	Manufacturing of machinery and equipment including office, accounting and computing equipment	356, 357, 358, 359
I28	Manufacturing of electrical machinery and apparatus n.e.c.	36
I29	Manufacture of radio, television and equipment and apparatus	371, 372, 373
I30	Manufacture of medical, precision and optical instruments, watches and clocks	374, 375, 376
I31	Manufacture of motor vehicles, trailers, semi-trailers and parts and accessories for motor vehicles and their engines	381, 382, 383
I32	Manufacture of other transport equipment	384, 385, 386, 387
I33	Manufacture of furniture	391
I34	Manufacturing n.e.c., sports goods and recycling	392, 393, 395, small scale
I35	Electricity, steam and hot water supply	411, 412, 413
I36	Collection, purification and distribution of water	42
I37	Construction	501, 502, 503, 504, 505, Own
I38	Wholesale trade and commission trade, except of motor vehicles and motor cycles	61
I39	Retail trade except of motor vehicles and motor cycles, repair of personal and household goods	62
I40	Sale, maintenance, and repair of motor vehicles and motor cycles; retail trade in automotive fuel	63
I41	Hotel and restaurants	64
I42	Land transport, transport via pipelines	71
I43	Water transport	72
I44	Air transport	73
I45	Supporting and auxiliary transport activities, activities of travel agencies	74
I46	Post and telecommunication	75
I47	Financial intermediation, insurance, real estate and business services	81
I48	Insurance and pension funding, except compulsory social security	82
I49	Activities auxiliary to financial intermediation	83
I50	Real estate activities	84
I51	Renting of machinery and equipment, without operator, and personal and household goods	85

Col. no.	Supply and use tables description	SIC classification
I52	Computer and related activities	86
I53	Research and experimental development	87
I54	Other business activities	88
I55	Central Government, Provincial Government and Local Government	91
I56	Education and other training services	92
I57	Health activities	93
I58	Sewerage, refuse, sanitation	94
I59	Membership activities	95
I60	Recreation, cultural, sport activities	96
I61	Other services	99
I62	Non-observed, informal, non-profit, households	0100, 0200, 0900

ADDITIONAL INFORMATION

Explanatory notes

Introduction

This statistical release contains independently compiled annual estimates of the gross domestic product (GDP) for the period 2005 to 2013 as well as an estimate for 2014 that is derived as the sum of 4 quarters of the year. It also contains quarterly estimates of GDP for the period 2005 to the fourth quarter of 2014. The estimates are based on the 2008 System of National Accounts (SNA) published by the United Nations in co-operation with other international organisations. This means that the methodology, concepts and classifications are in accordance with the latest guidelines of an internationally agreed system of national accounts. The estimates of real GDP are expressed in terms of a 2010 base year.

Methodology

Annual GDP estimates are calculated independently from the quarterly estimates within a supply and use framework. Alternatively, annual GDP estimates are derived as the sum of the GDP for the four quarters of the relevant year in the absence of supply and use tables.

Short-term indicators are used to estimate the quarterly GDP. However, they are by their nature incomplete in terms of coverage, and annual changes of output measured through them are generally not as reliable as in instances where the results of annual surveys are used. Therefore, the quarterly estimates must be adapted to the independent annual estimates when such estimates become available.

Classifications

The estimates of value added by industry are classified according to the Standard Industrial Classification of all Economic Activities (SIC), fifth edition. SIC is based on the third revision of the International Standard Industrial Classification of all Economic Activities (ISIC), with suitable adaptations for South African conditions. The Central Product Classification (CPC) has now been adopted and used to classify the supply and use of products and services.

Seasonal adjustment

The quarterly value added and GDP estimates have been seasonally adjusted. Seasonal adjustment is a means of removing the estimated effects of normal seasonal variation from the series so that the effects of other influences on the series can be more clearly recognised. Seasonal adjustment does not aim to remove irregular or non-seasonal influences which may be present in any particular quarter. Influences that are volatile or unsystematic can still make it difficult to interpret.

Reliability of estimates

Revision of the estimates for all components of the national accounts is usually done every five years in conjunction with the rebasing of the estimates at constant prices. At such a time the results of censuses that have become available in the meantime and any other additional information sources are incorporated in the estimates. Due to the availability of more comprehensive data, revisions are also made of estimates for the latest quarters and, once a year, for the three latest years.

Related publications

Users may also wish to refer to the following publications from Stats SA -

Annual Financial Statistics

Quarterly Financial Statistics

Quarterly Employment Statistics

Quarterly Labour Force Survey

Producer Price Index

Consumer Price Index

Financial statistics of consolidated general government

Various monthly surveys

Unpublished statistics	In some cases Stats SA can also make available unpublished information to users. This information can be made available electronically or through printouts.										
Pre-release policy	<p>Stats SA keeps new estimates of economic indicators strictly confidential prior to the date and time of release. To enable selected government departments to prepare their public responses, the following pre-release procedure is applied. It accords with practice in leading statistical agencies.</p> <p>A strict lock-up procedure is put in place that allows media and government officials access to the data one hour before embargo. There are, however strict controls to ensure that the information is not disseminated outside of the lock-up facility before the embargo time.</p>										
Symbols and abbreviations	<table><tr><td>CPC</td><td>Central Product Classification</td></tr><tr><td>SARB</td><td>South African Reserve Bank</td></tr><tr><td>SIC</td><td>Standard Industrial Classification</td></tr><tr><td>SNA</td><td>System of National Accounts</td></tr><tr><td>Stats SA</td><td>Statistics South Africa</td></tr></table>	CPC	Central Product Classification	SARB	South African Reserve Bank	SIC	Standard Industrial Classification	SNA	System of National Accounts	Stats SA	Statistics South Africa
CPC	Central Product Classification										
SARB	South African Reserve Bank										
SIC	Standard Industrial Classification										
SNA	System of National Accounts										
Stats SA	Statistics South Africa										

A complete set of classifications of industries, sources and methods and definitions is available in the GDP release P0441 for the third quarter 2014 on the Stats SA website: <http://www.statssa.gov.za>

General information

Stats SA publishes approximately 300 different statistical releases each year. It is not economically viable to produce them in more than one of South Africa's eleven official languages. Since the releases are used extensively, not only locally but also by international economic and social-scientific communities, Stats SA releases are published in English only.

Stats SA has copyright on this publication. Users may apply the information as they wish, provided that they acknowledge Stats SA as the source of the basic data wherever they process, apply, utilise, publish or distribute the data; and also that they specify that the relevant application and analysis (where applicable) result from their own processing of the data.

Advance release calendar

An advance release calendar is disseminated on www.statssa.gov.za

Stats SA products

A complete set of Stats SA publications is available at the Stats SA Library and the following libraries:

National Library of South Africa, Pretoria Division
National Library of South Africa, Cape Town Division
Natal Society Library, Pietermaritzburg
Library of Parliament, Cape Town
Bloemfontein Public Library
Johannesburg Public Library
Eastern Cape Library Services, King William's Town
Central Regional Library, Polokwane
Central Reference Library, Mbombela
Central Reference Collection, Kimberley
Central Reference Library, Mmabatho

Stats SA also provides a subscription service.

Electronic services

A large range of data are available via on-line services, diskette and computer printouts. For more details about our electronic data services, contact (012) 310 8600/8390/8351/4892/8496/8095.

You can visit us on the internet at: www.statssa.gov.za

Enquiries

Telephone number: (012) 310 8600/8390/8351/4892/8496/8095 (user information services)
(012) 310 8241 (technical enquiries)
(012) 310 8161 (orders)
(012) 310 8490 (library)

Fax number: (012) 310 8304 (technical enquiries)

Email address: Gerhardb@statssa.gov.za (technical enquiries)
Info@statssa.gov.za (user information services)
distribution@statssa.gov.za (orders)

Postal address: Private Bag X44, Pretoria, 0001

Produced by Stats SA